

# CL1-S

## Soffit System

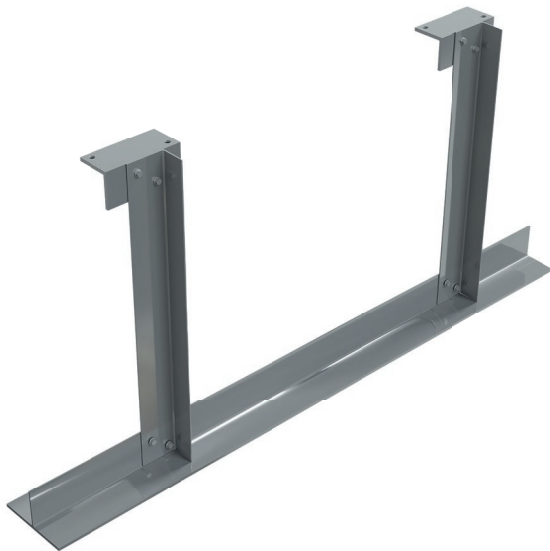


## DATA SHEET

**CLAD-LINE'S CL1-S soffit system is suitable for face fixed soffit panels and discrete fixed cassettes.**

Soffits to un-heated areas are frequently not insulated but if thermal bridging is an issue, flat isolation pads can be supplied to limit thermal transmission and prevent bimetallic corrosion. T rails are fixed to the bottom of the 'dropper' L rails where panel joints occur. For intermediate and panel end support, CLAD-LINE'S L rails can be used.

CLAD-LINE hold extensive stock of both T and L rails and can fabricate in house to exact customer requirements. The CL1-S system can also be used to create sloping soffits through cutting of the rails to the required angle.



### Material:

#### Cladding Support and Dropper Rails - CL1-S Rails (T/L):

Aluminium Grade 6063 T6 (mill finish)

#### CL1-S Support Brackets:

Aluminium Grade 6063 T6 (mill finish)

### Fire Performance:

#### Cladding Support and Dropper Rails - CL1-S Rails (T/L):

A1 Reaction to Fire Classification to EN13501

#### CL1-S Support Brackets:

A1 Reaction to Fire Classification to EN13501  
(Iso Pad – exempt under Regulation 7 (3) i of  
the Building Regulations  
Approved Document B\*

\*Building Regulations Approved Document B  
(Fire Safety) volume 1: Dwellings, 2019 editions  
incorporating 2020 amendments PLUS June  
2022 amendments to Approved Document B,  
volume 1 and volume 2